

South East Technological University, Ireland as a Host Organisation for MSCA Postdoctoral Fellows

Dr. Geraldine Canny, Head of Research

research.wd@setu.ie

May 25 2022.

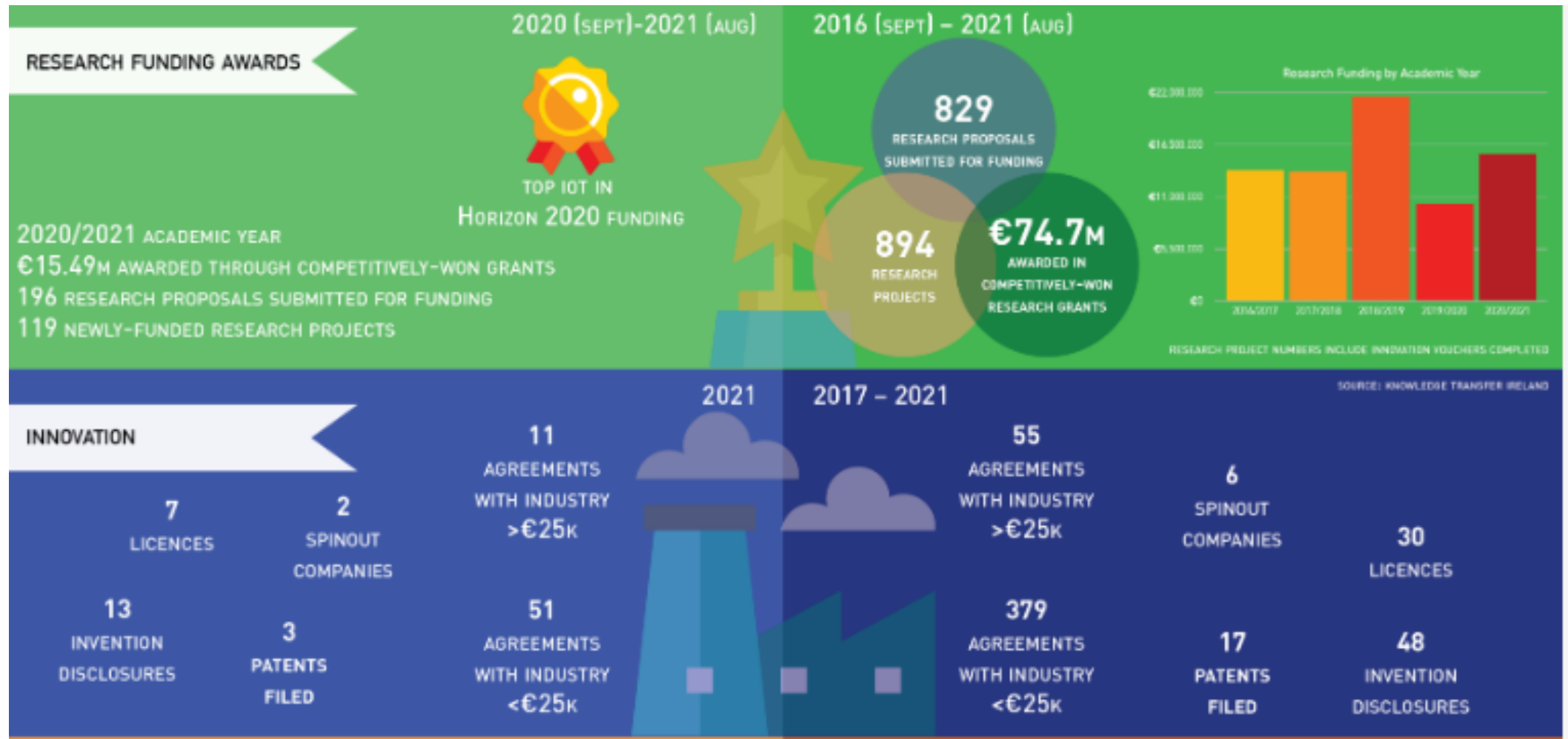
setu.ie
INSPIRING FUTURES



South East Technological University (SETU)

- 18,000 students and 1,800 staff
- 550 research-active staff and over 400 PGR students
- WIT had the highest research funding drawdown of all IoTs/TUs under Horizon 2020
- Extensive collaborations with industry, charities and hospitals
- 4 Technology Gateway Centres

<https://www.setu.ie/research>



Annual report: [Waterford Institute of Technology Research Profile - Waterford Institute of Technology \(wit.ie\)](https://www.wit.ie/research-profile)

An Excellent and Supportive Research Environment

- SETU holds the HRS4R award
- A range of [training and mentoring programmes](#) are offered



Research themes on the Waterford Campus

School of Science

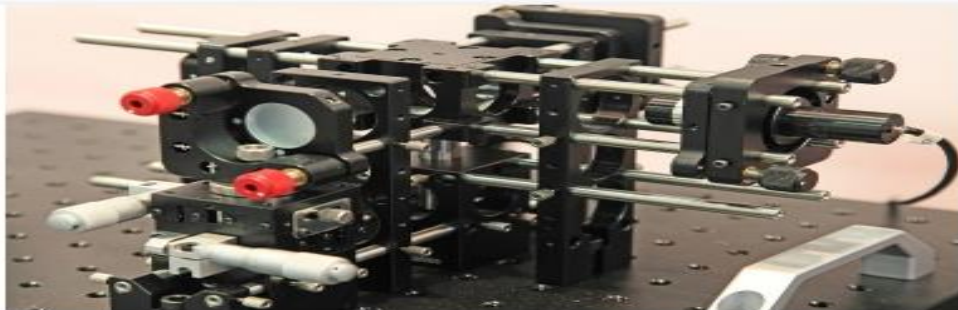
Science Research



**Automotive
Control Group**



**Centre for INformation SYstems and
Techno-culture**



Optics Research Group

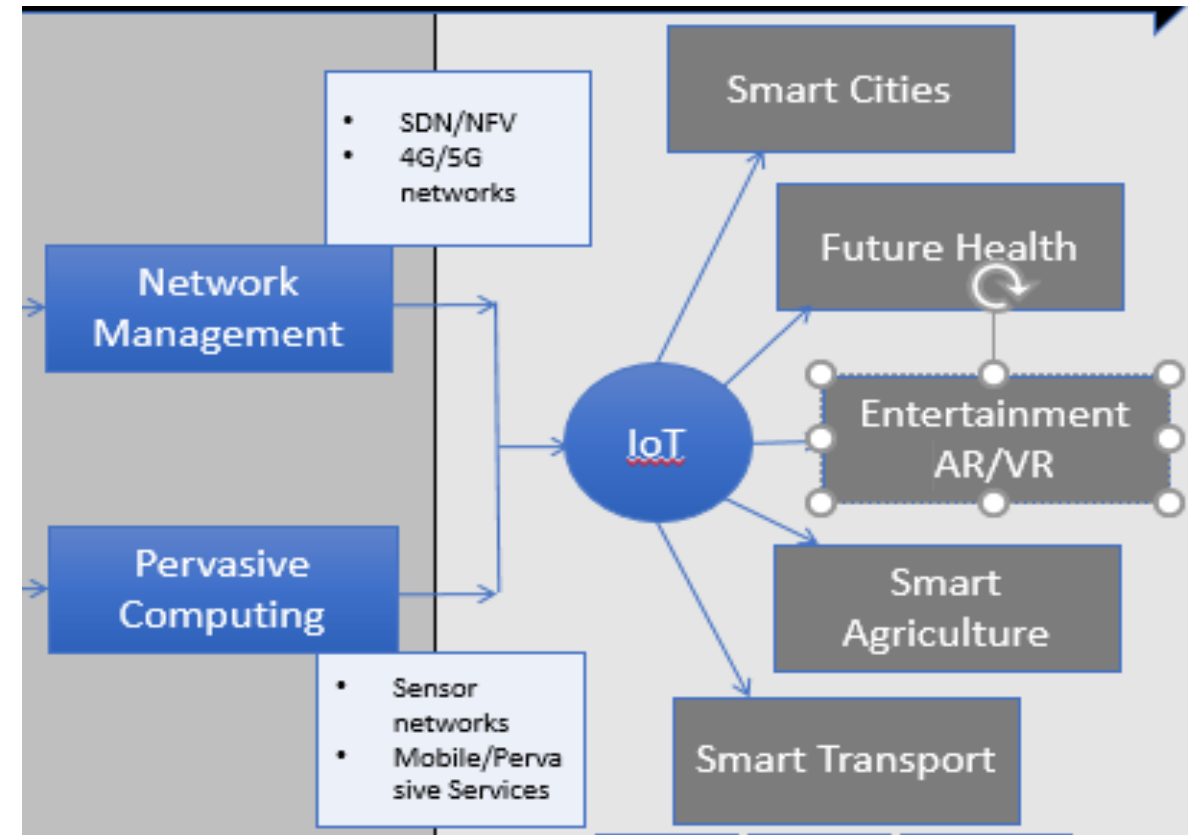


Visit the School of Science

https://www.wit.ie/schools/science_computing/school_of_science

Walton Institute for Information & Communication Systems Science

- Over 80 researchers working on diverse, multidisciplinary projects from Agri-tech, future networks, Interactive technologies, AI, Quantum computing to Biomedical nano and molecular telecommunications
- Over €140 million funding from research and industry collaborations.



<https://waltoninstitute.ie/research/key-research>

H2020 Projects coordinated by the Walton Institute

DEMETER, a RIA, involves large-scale deployment of farmer-driven, interoperable smart farming Internet of Things-based platforms, delivered through a series of 20 pilots across 18 countries.

<https://h2020-demeter.eu/>

FAITH, a RIA, is developing an Artificial Intelligence application that remotely identifies depression markers, using Federated Learning, in people that have undergone cancer treatment.

<https://www.h2020-faith.eu/>

School of Science

PMBRC Centre

The Centre hosts a 800m² state-of-the-art research facility with over 30 research personnel. A truly multidisciplinary team, researchers at the PMBRC include chemists, biologists, biomedical scientists, physicists and engineers, and the centre has established links with national and international partners in industry, academia and medical care institutions.

Research areas:

Pharmaceutical analysis, Material characterisation, and Pre-formulation

Novel sensing and process technologies

Drug delivery and formulation

Molecular Biotechnology

Coordinates the Orbital MSCA ITN project: <https://www.orbital-itn.eu/>

School of Engineering

Sustainability, architecture and the built environment (SABRE) Research Centre

The newly established Centre comprises several research groups devoted to thematic areas in the realm of Architecture and the Built Environment, including BIM & Digital construction, Design, culture and conservation and Lean methodologies.

[Engineering Research Groups - Waterford Institute of Technology \(wit.ie\)](http://www.wit.ie/research/centres_and_groups/sabre_research_centre)

Convergent Technologies Research Group

Multidisciplinary research. The current focus of the group is smart polymer materials and novel processing technologies for biomedical and energy harvesting applications.

https://www.wit.ie/research/centres_and_groups/convergent_technologies_research_group

School of Engineering

SEAM Centre

- One of the leading Technology Gateway Centres in Ireland providing Materials Engineering solutions for wide ranging industrial sectors (Medical Devices, Pharma, Precision Engineering, Energy, Electronics etc.) ISO 9001:2015 accreditation.

Some ongoing research projects:

- Enhanced biocompatibility for biomedical implants for improved clinical outcomes
- Structure property relationship for biodegradable additively manufactured metal components
- Evaluation of the metal additive manufacturing process through the study of the recyclability of metal powders and in-situ metrology
- The advancement of bio-pharmaceutical devices with enhanced functionality via additive manufacturing
- Characterisation and analysis of the thermal conductivity of AlSi10Mg fabricated by Laser Powder Bed Fusion.

www.seam.ie



School of Health Sciences

Department of Nursing and Healthcare

Mental health and well-being; Substance use and addictions; Tele/E Health. A well-developed network of international collaborators in Europe, America and Africa.

Department of Sport and Exercise Science

Population physical activity including active travel and gender-sensitive physical activity interventions; Exercise interventions for clinical populations, primarily cancer and frail older adults; Jockey-related research; Sports Nutrition and Human Movement Analysis.

Nutrition Research Centre Ireland

The NRCI, led by ERC awardee Prof. John Nolan, has extensive research expertise in the area of nutrition to enhance human function, with particular expertise in the area of visual function and cognitive function. Nutritional interventional studies for eye and brain form the basis of study at the NRCI, with capacity to measure dietary patterns, biochemical blood nutrients, skin nutrition, eye nutrition, brain nutrition, visual function, cognitive function and quality of life.

https://www.wit.ie/schools/health_sciences/school-of-health-sciences

<http://nrci.ie/about-us/>

School of Business

The School of Business in WIT, one of Ireland's largest integrated Business Schools, is a unique learning community priding itself on its relationship with its students. The School incorporates undergraduate, postgraduate, executive and entrepreneurial education, with links to business, the professions, and international education.



The School's core theme is developing the thinking professional, fit for business and fit for life. We

Centre for Finance and Business research

RIKON Centre

Research areas:

- Innovation management
- Lean methodologies
- Marketing and Digital transformation
- Tourism and rural development

<https://www.rikon.ie/academic-research/>

The RIKON logo, featuring the letter 'R' in a vibrant green color and the letters 'IKON' in a dark grey color.

School of Humanities

	Analysing Social Change (ASC)	Crime and Justice (CJRG)	Spirituality in Society and the Professions (SpirSoP)	Creativity and Culture (CCRG)
Research themes	<ul style="list-style-type: none"> • Changing patterns of care and socialisation • Inequality and social justice • Political change and new political challenges • Economy, welfare, and public administration • Cultural change 	<ul style="list-style-type: none"> • Punishment, processes, practices, and cultures • Desistance, resettlement, and prison studies • Victimology and victimisation • Security, radicalisation, and online terrorism • Alcohol, policing, and public order 	<ul style="list-style-type: none"> • Greening the Practice of Spiritual Direction • Exploring Spirituality Programmes which transform an addiction journey • Developing Discernment Procedures for corporate/not-for-profit decision making • Designing models for Spiritual Autobiography • Creating models for Meditation for various stages of the Life Cycle 	<ul style="list-style-type: none"> • Cultural (meaning) • Social (organising relationships with families) • Economic (resources organised and used) • Political (democracy decisions, and leadership) • Performing the Region-Theatre Studies
Website	https://www.wit.ie/research/centres_and_groups/wit_research_groups/humanities-research-groups/analysing-social-change-research-group/	https://www.wit.ie/research/centres_and_groups/wit_research_groups/humanities-research-groups/crime-justice-research-group/	https://www.wit.ie/research/centres_and_groups/wit_research_groups/humanities-research-groups/spirsop/	https://www.wit.ie/research/centres_and_groups/wit_research_groups/creativity_culture_research_group/

School of Life Long Learning and Education

- Innovation in teaching; Adult education; Lifelong learning; Vocational education and training
- Policy, Practice and Professional development in education

Involvement in Research Networks:

- Asia-Europe Education Research Hub for Lifelong Learning (asemllhub.org)
- European Continuing Education Network (eucen.eu)
- European Society for Research in Adult Education (esrea.org)

<https://www.wit.ie/schools/education/school-of-lifelong-learning-contact/>



Research themes on the Carlow Campus

EnviroCORE

EnviroCORE is a world class research centre in Sustainable Bioenvironmental Technologies in the niche areas of: Ecology and Biodiversity Studies, Phytotechnologies for Waste Treatment; Biomass Production and Plant Biotransformation; Environmental Sensors, Bio-indicators and Biosensors; Environmental Monitoring and Risk Assessment.

<http://www.envirocore.ie/>

Partner on the Greener H2020 RIA project

<https://www.greener-h2020.eu/>

Partner on the BRTE H2020 MSCA-RISE project

[Building Resilience through Education | BRTE Project | Fact Sheet | H2020 | CORDIS | European Commission \(europa.eu\)](#)

EngCORE

engCORE is a multidisciplinary research cluster that provides a focal point for the diverse research interests of the Faculty of Engineering on the Carlow campus and acts to foster and develop research related to its three thematic areas of:

- Smart Materials & Mechanics
- Circuits & Systems
- The Intelligent Built Environment

<http://www.engcore.ie/>

Design+

The Design+ Enterprise Ireland Technology Gateway Centre provides a design led approach to projects in the areas of engineering, ICT and bioscience.

<http://www.designplus.ie/>

Applicant Profile

- Maximum 8 years post-PhD
- Excellent for career stage (publications, prizes, grants)
- Well-rounded profile (leadership, supervision, communication etc.)
- Proficient in spoken and written english (e.g. minimum score of 6.5 in IELTS)

Procedure and Support Offered

- Choose a supervisor(s) and send her/him your **CV, english cert. and a project outline**. The supervisor must agree to host you.
- Applicants will receive the following support:
 - Application handbook
 - Supporting documents
 - Personalised advice sessions by Zoom
 - Proposal review (complete proposal to be sent by a specified date)
- Successful applicants will receive **Post-award support** with finance and reporting, advice about subsequent funding applications (e.g. ERC Starting Grant) and **training** in transferable skills (IP, Open science, Communication etc.).



https://www.wit.ie/research/our_research/broaden-your-horizons

Thank you for your attention.
research.wd@setu.ie

setu.ie
INSPIRING FUTURES

